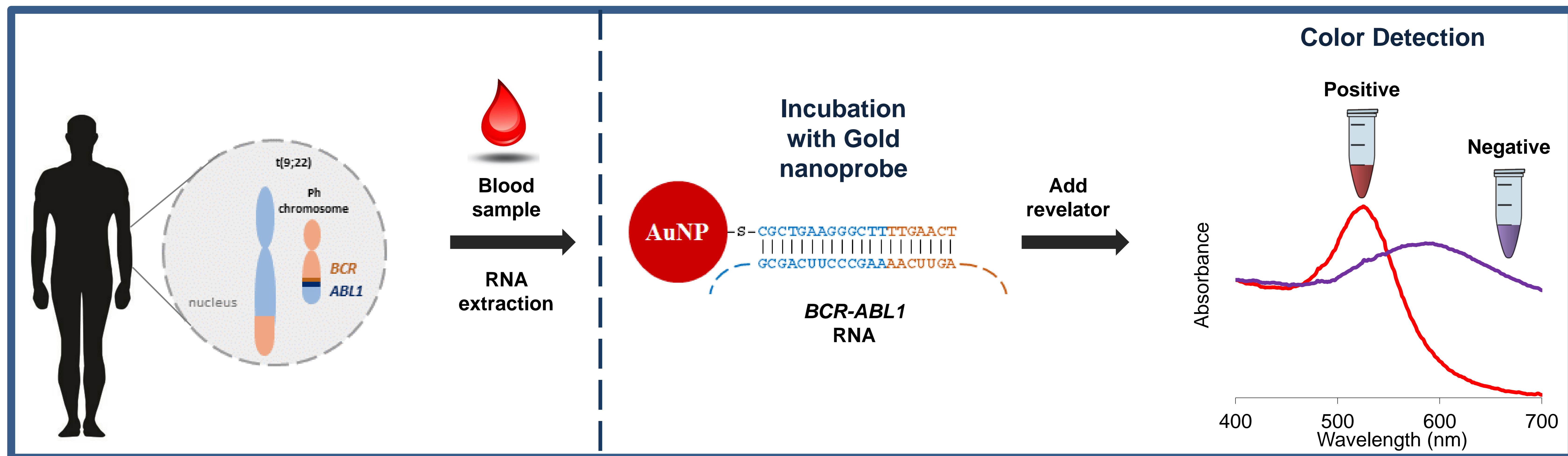
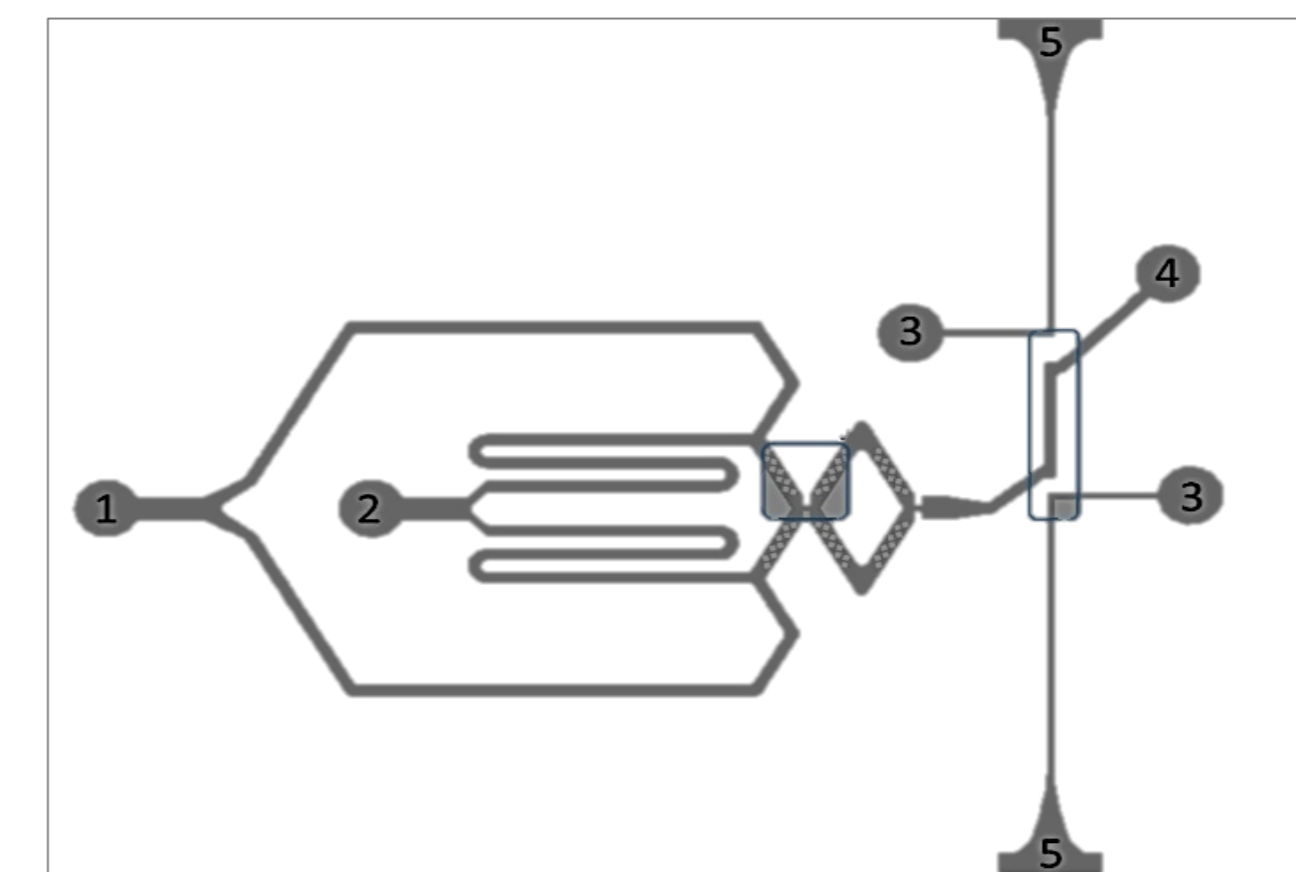


## Au-nanoprobe color assay

- ✓ Genetic hallmark of CML - Philadelphia Chromosome - t(9;22) translocation originates a fusion gene *BCR-ABL1*

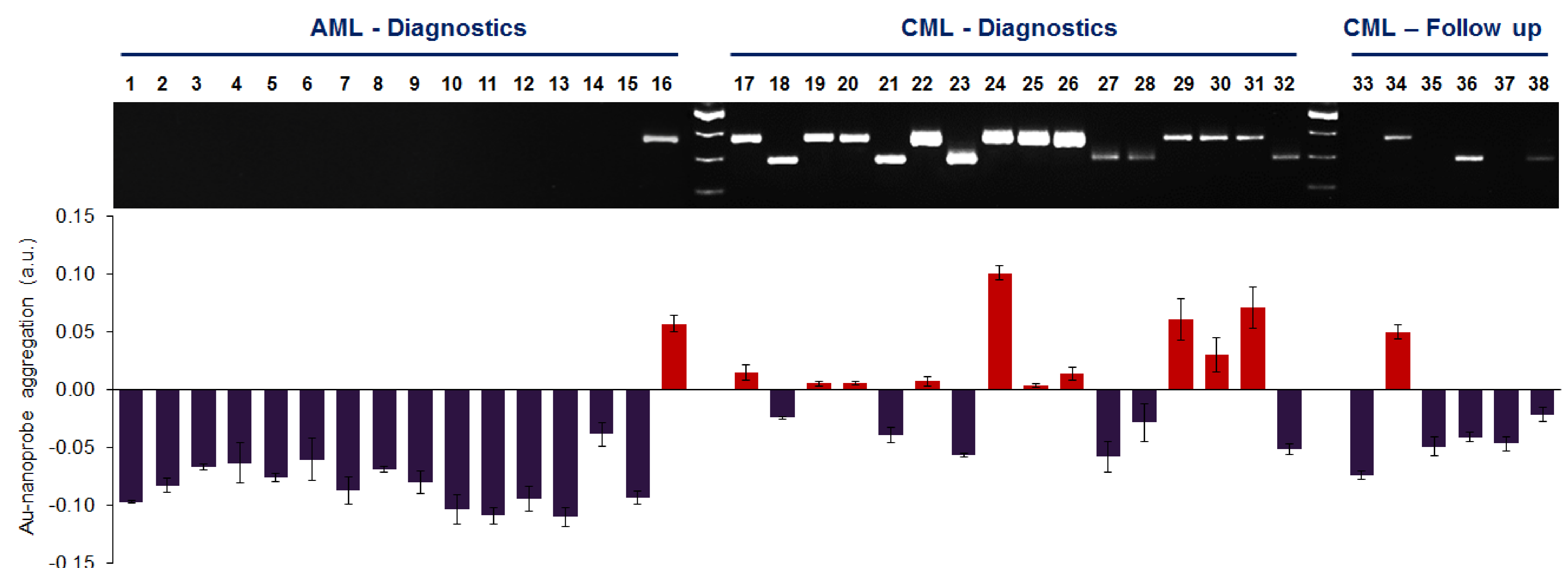


Lab-on-Chip



## Au-nanoprobe assay on clinical samples

- ✓ Accurate identification of *BCR-ABL1* positive samples
- ✓ 100% positive and negative predictive values
- ✓ Clinical validation of optimal performance



## Major advantages

- ✓ CML point-of-care testing
- ✓ No retrotranscription
- ✓ Sample to results in 3 steps < 45 min
- ✓ Clinical performance validated
- ✓ Ready to translate

## Acknowledgements

We acknowledge Fundação para a Ciência e Tecnologia (FCT/MEC) for financial support (Project PTDC/BBNAN/1812/2012 and UCIBIO UID/Multi/04378/2013) and co-financed by ERDF under PT2020 Partnership Agreement (POCI-01-0145-FEDER-007728), RV for SFRH/BD/52211/2013.