



**INSTITUTO
DOM LUIZ**



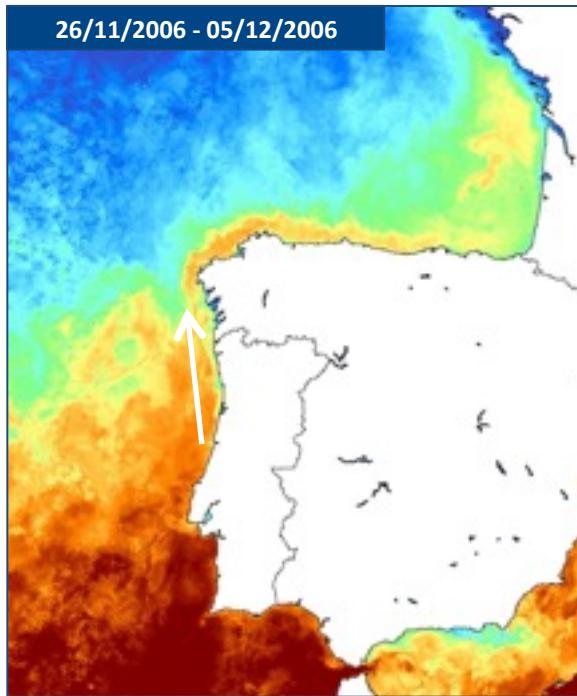
Atmosphere-Ocean interaction and climate change in the Eastern Atlantic margin

Ana Machado

Northwestern Iberian Margin

Winter

Iberian Poleward Current (IPC)

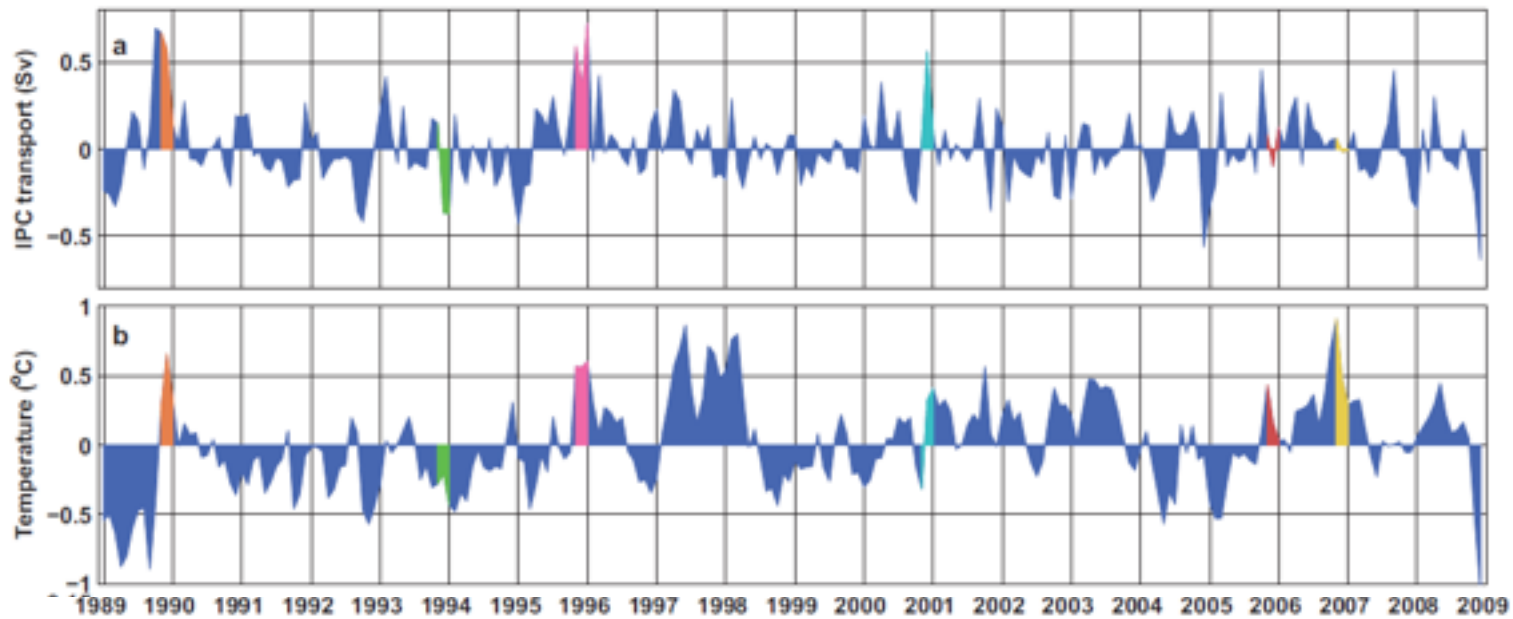


Satellite image were received in the University of Lisbon Satellite Receiving station and processed by Dmitri Boutov.

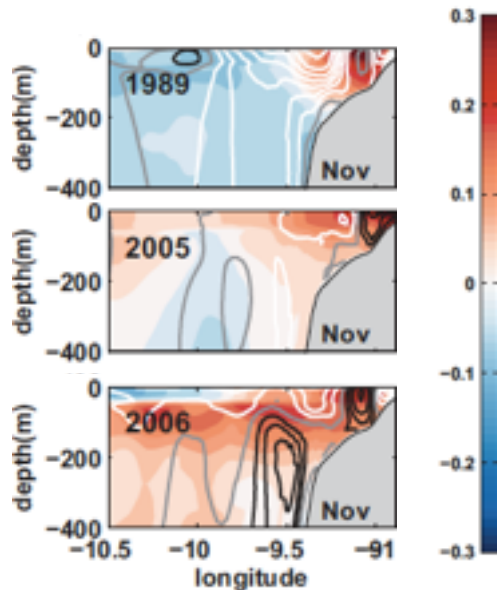
- What drives the interannual variability of temperature and salinity in the Northwestern Iberian Margin?
- Ocean model simulation, at around 2.3km resolution, from 1989 to 2008

Teles-Machado, A., A. Peliz, J.C. McWilliams, X. Couvelard, I. Ambar (2015): Circulation on the Northwestern Iberian Margin: Vertical structure and seasonality of the alongshore flows. Progress in Oceanography

Interannual Variability



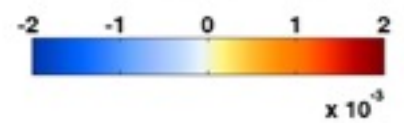
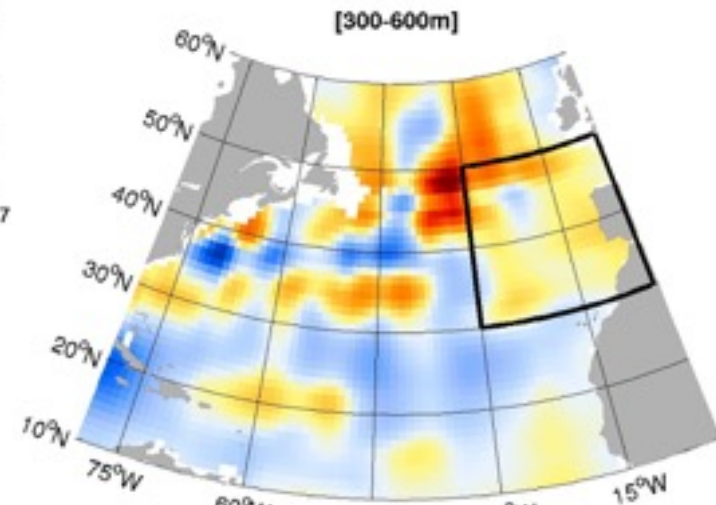
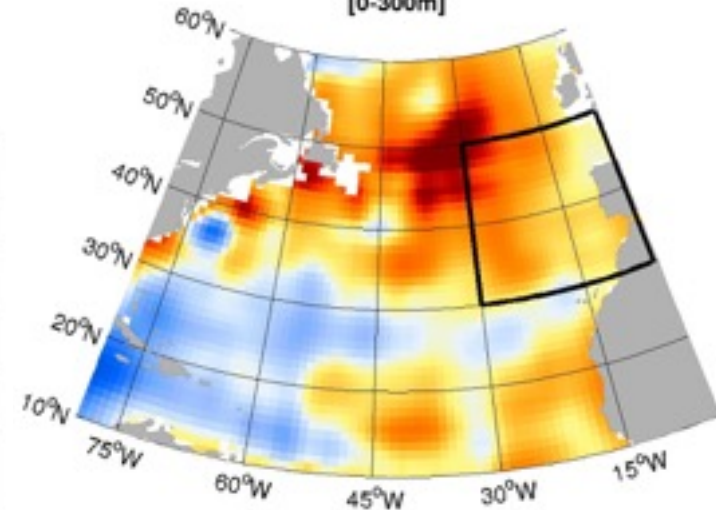
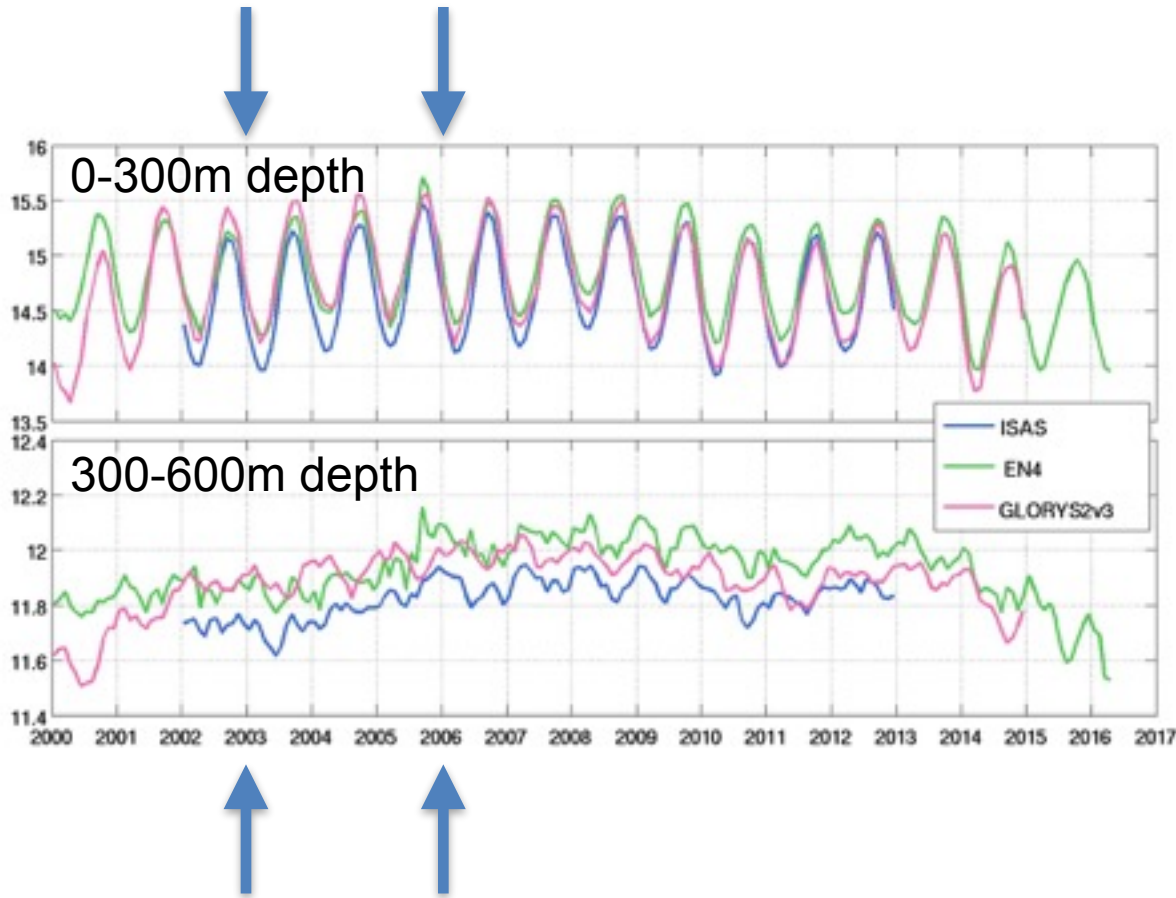
Temperature Anomalies (°C)



Ana Teles-Machado, Álvaro Peliz, James C. McWilliams, Rita Cardoso, Pedro Soares, Pedro Miranda (2015) On the year-to-year changes of the Iberian Poleward Current, *Journal of Geophysical Research - Oceans*, 120.

Interannual Variability

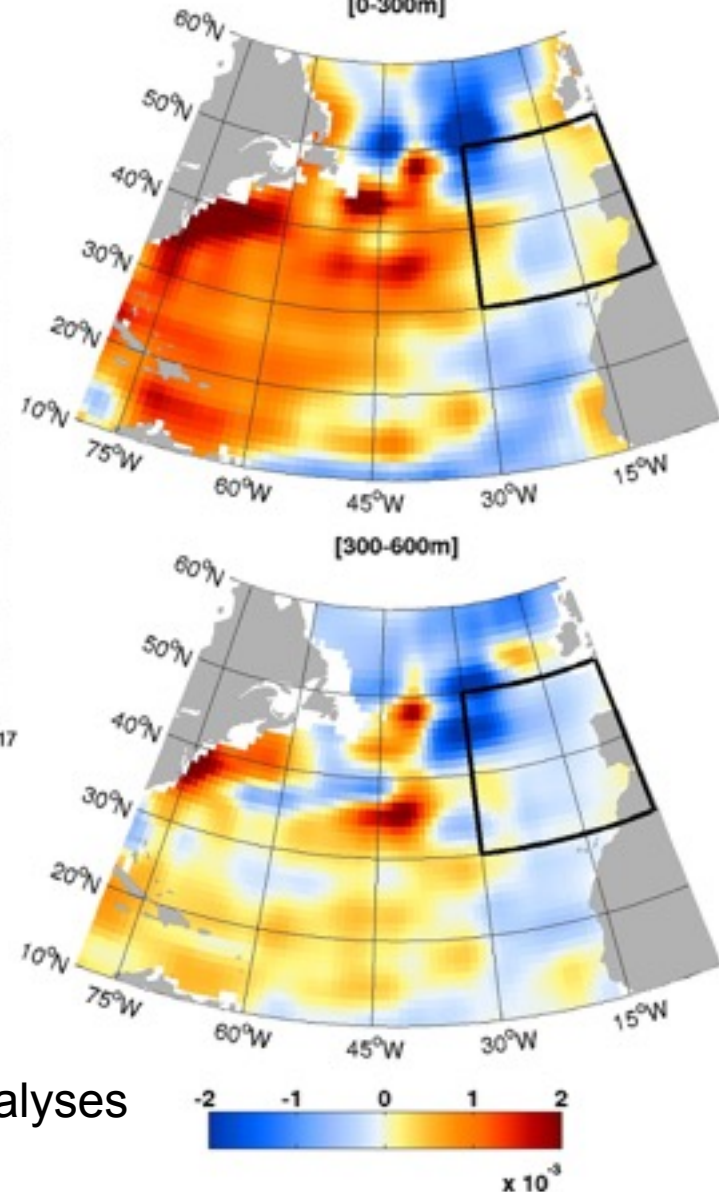
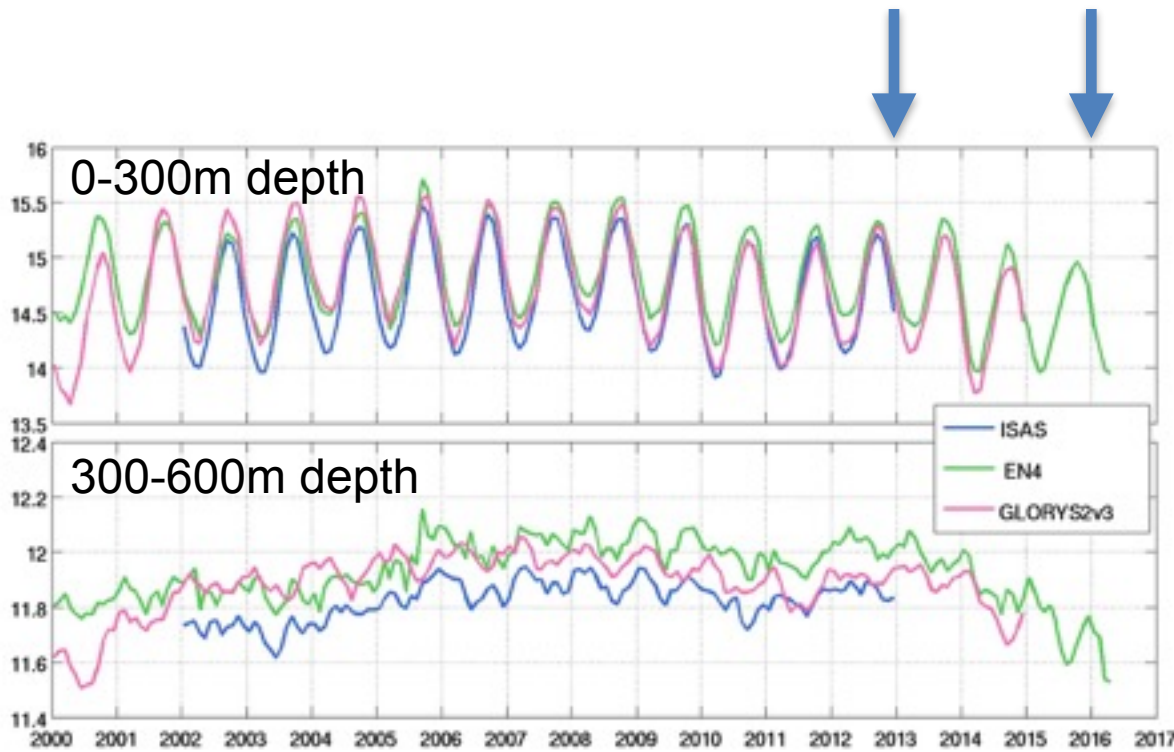
EN4



ISAS — IFREMER database based on ARGO data
EN4 — Met Office Hadley Centre observations obj. analyses
GLORYS2V3 — Mercator Ocean Reanalysis

Interannual Variability

EN4



ISAS — IFREMER database based on ARGO data
EN4 — Met Office Hadley Centre observations obj. analyses
GLORYS2V3 — Mercator Ocean Reanalysis

Acknowledgements

This study had the support of the FCT

Ana Machado was funded with a PhD grant (SFRH/BD/40142/2007) and a Pos-Doc grant (SFRH/BPD/100720/2014)

PEst-OE/MAR/UI0199/2011

Data from

IFREMER - France

Mercator Ocean - France

Met Office - UK

Pathfinder Satellite - US