



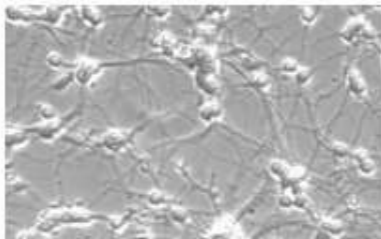
Antonio Jacinto



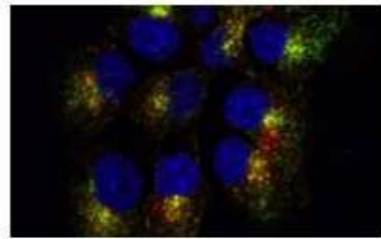
BIOMEDICAL AND CLINICAL RESEARCH



MENTAL
HEALTH



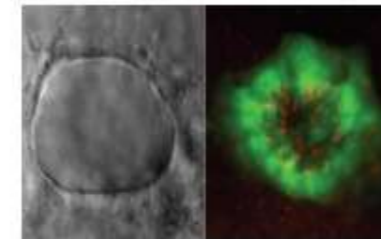
METABOLISM
AND INFLAMMATION



ONCO
BIOLOGY



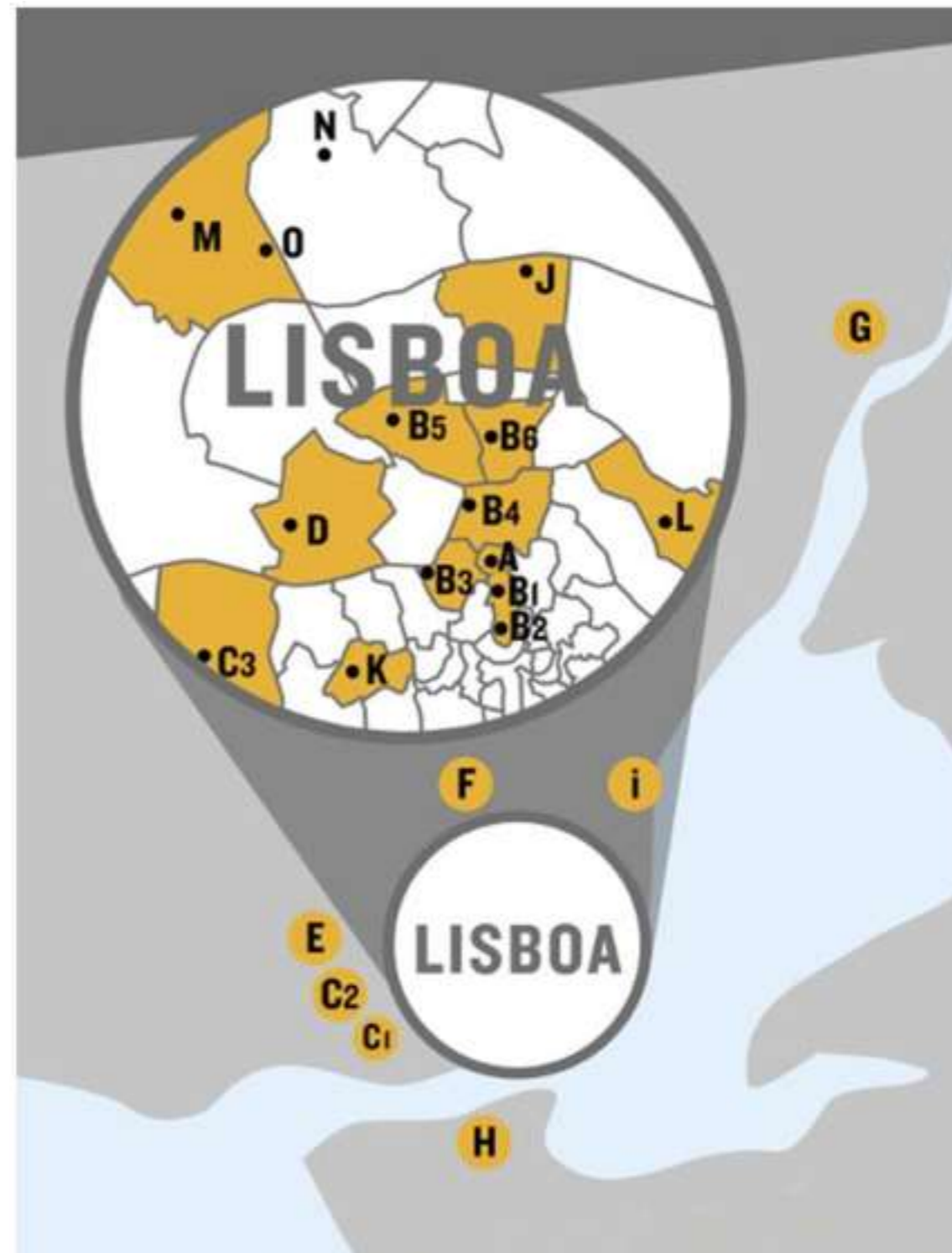
RARE
DISEASES





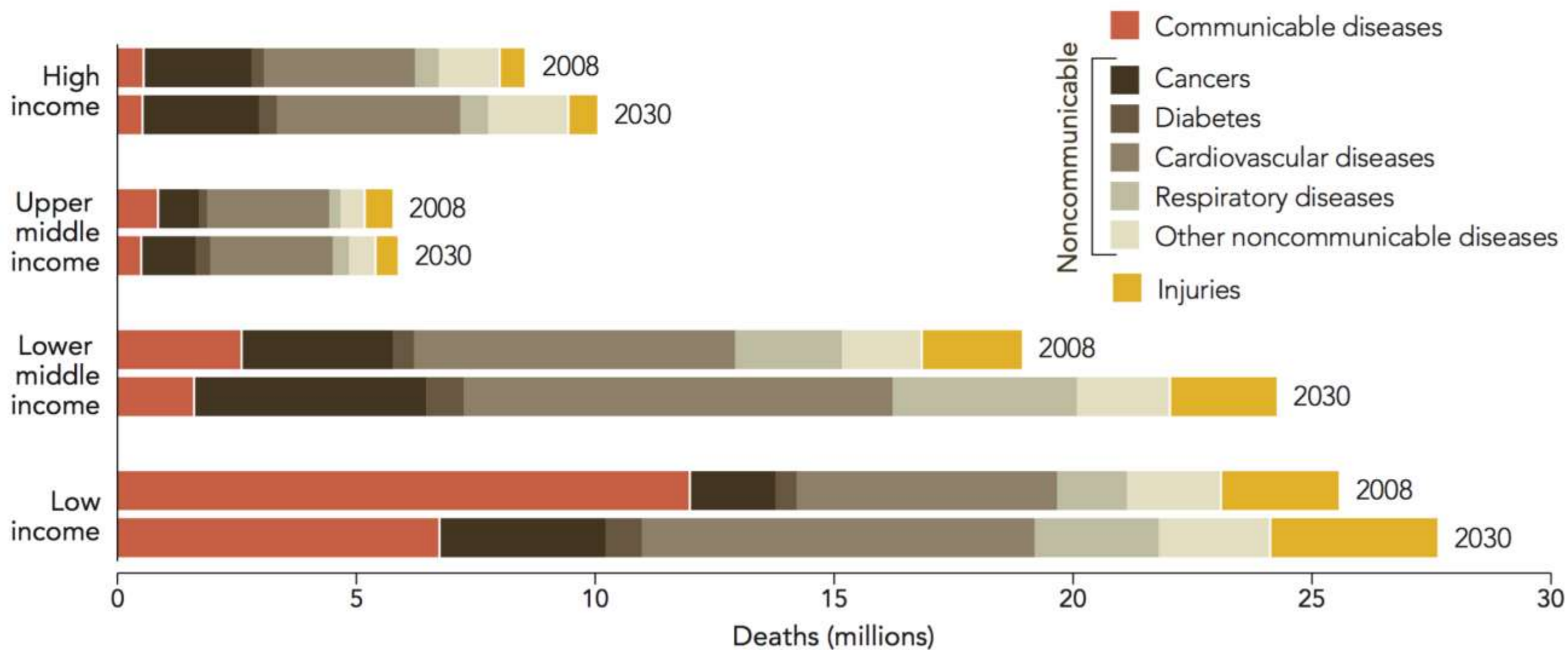
21 Hospitais
20 Agrupamentos de
Centros de Saúde

em 4 Distritos
e 15 Câmaras
Municipais

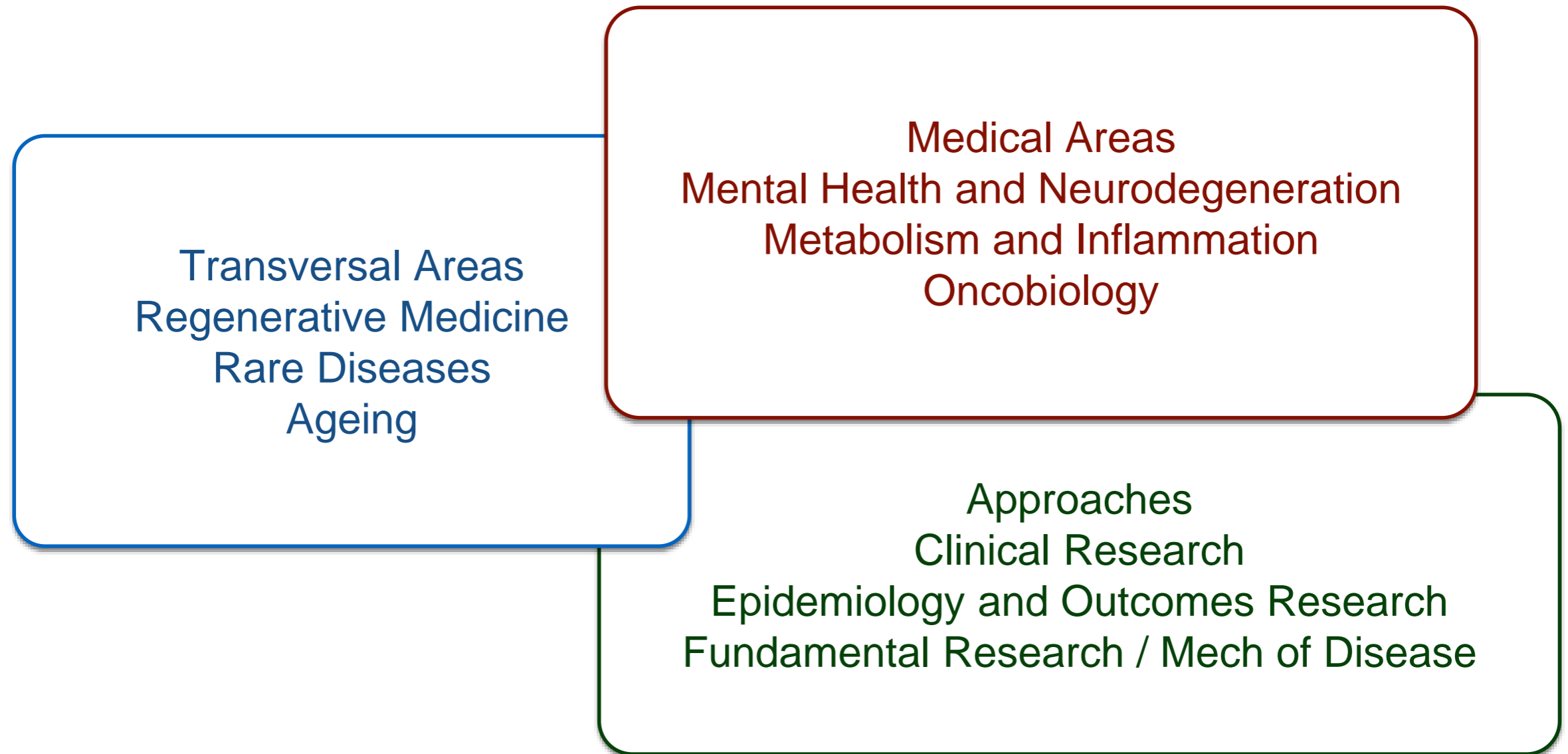


Why Chronic Diseases?

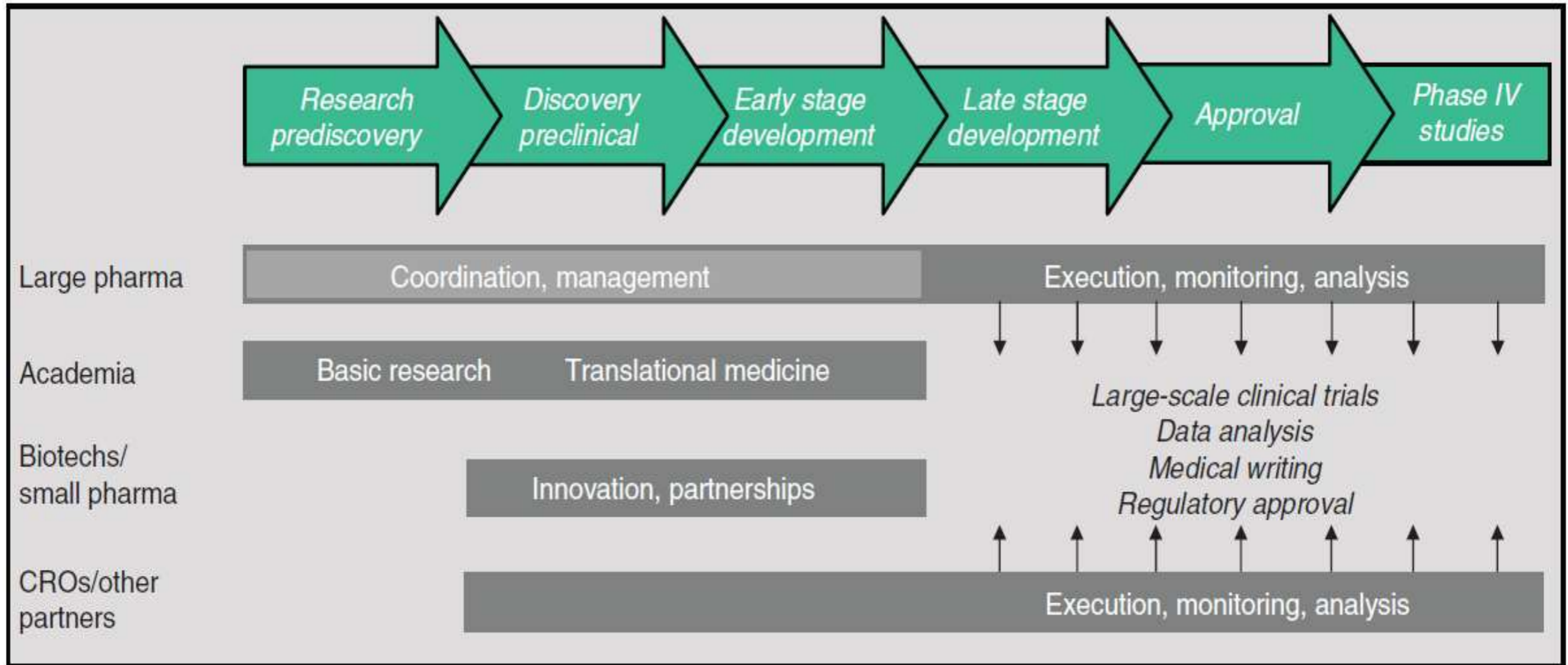
Predicted Causes of Death, 2008 and 2030



Chronic Diseases

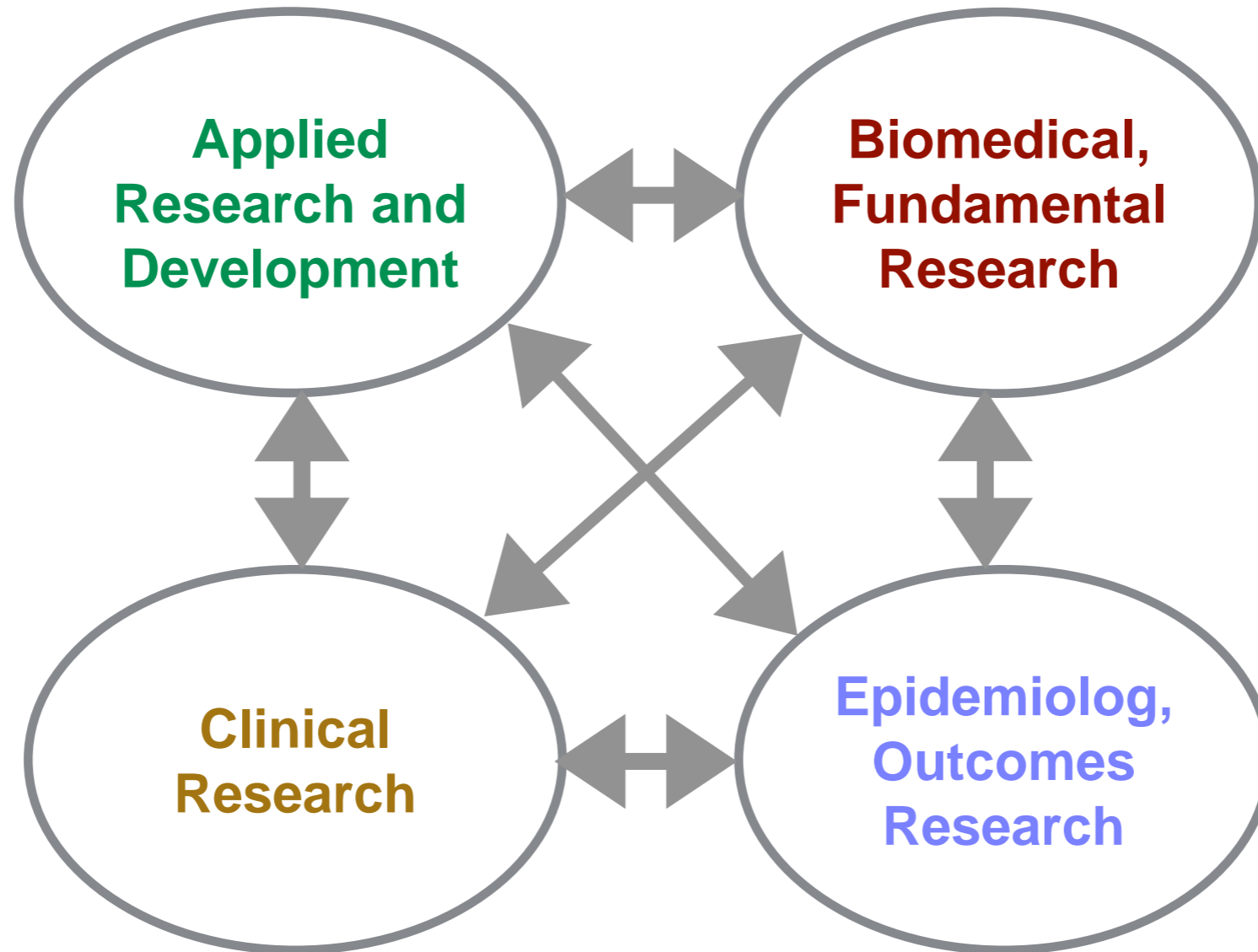


INDICADORES GERAIS CEDOC	2008	2009	2010	2011	2012	2013	2014/15
Investigadores	78	124	142	182	198	233	250
Doutorados	33	51	58	70	81	104	120
Teses de Doutoramento concluídas na NMS/FCM, com orientação dos membros do CEDOC	2	1	4	7	5	13	12



A FIPNet (fully integrated pharmaceutical network) model of drug development, in which the core capabilities of different stake holders in the development process are leveraged (Kaitin 2010)

Biomedical Innovation Ecosystem



We need not only more money but also a cultural change!

- Funding agencies (FCT) have to fund the best projects and ideas
- Fundamental research institutes have to take translation seriously
- Applied research organisations have to get to the market
- Hospitals (academic medical centres) have to take research at all levels seriously
- Pharma industry has to invest locally

To rush into translation may result in becoming lost in translation.

